



**REGIONAL SPECIALISED METEOROLOGICAL CENTRE-TROPICAL CYCLONES, NEW DELHI
TROPICAL WEATHER OUTLOOK**

DEMS-RSMC TROPICALCYCLONES NEW DELHI DATED 04.10.2022

TROPICAL WEATHER OUTLOOK FOR NORTH INDIAN OCEAN (THEBAY OF BENGAL OF BENGAL AND ARABIAN SEA) VALID FOR NEXT 120 HOURS ISSUED AT 0600 UTC OF 04.10.2022 BASED ON 0300 UTC OF 04.10.2022.

BAY OF BENGAL:

YESTERDAY'S LOW PRESSURE AREA OVER WESTCENTRAL BAY OF BENGAL AND NEIGHBOURHOOD LAY OVER WESTCENTRAL BAY OF BENGAL OFF ANDHRA PRADESH COAST AT 0300 UTC OF TODAY, THE 4TH OCTOBER, 2022. IN ASSOCIATION WITH THE SYSTEM, SCATTERED TO BROKEN LOW AND MEDIUM CLOUDS WITH EMBEDDED INTENSE TO VERY INTENSE CONVECTION LAY OVER WESTCENTRAL BAY OF BENGAL & NORTHWEST BAY OF BENGAL, ODISHA AND NORTH COASTAL ANDHRAPRADESH. MINIMUM CLOUD TOP TEMPERATURE IS MINUS 93 DEGREE CELCIUS.

SCATTERED TO BROKEN LOW AND MEDIUM CLOUDS WITH EMBEDDED INTENSE TO VERY INTENSE CONVECTION LAY OVER NORTH BAY OF BENGAL, WESTCENTRAL BAY OF BENGAL & SOUTH BAY OF BENGAL AND ANDAMAN SEA. SCATTERED LOW AND MEDIUM CLOUDS WITH EMBEDDED WEAK CONVECTION LAY OVER EASTCENTRAL BAY OF BENGAL.

PROBABILITY OF CYCLOGENESIS (FORMATION OF DEPRESSION) DURING NEXT 120 HRS:

24 HOURS	24-48 HOURS	48-72 HOURS	72-96 HOURS	96-120 HOURS
NIL	NIL	NIL	NIL	NIL

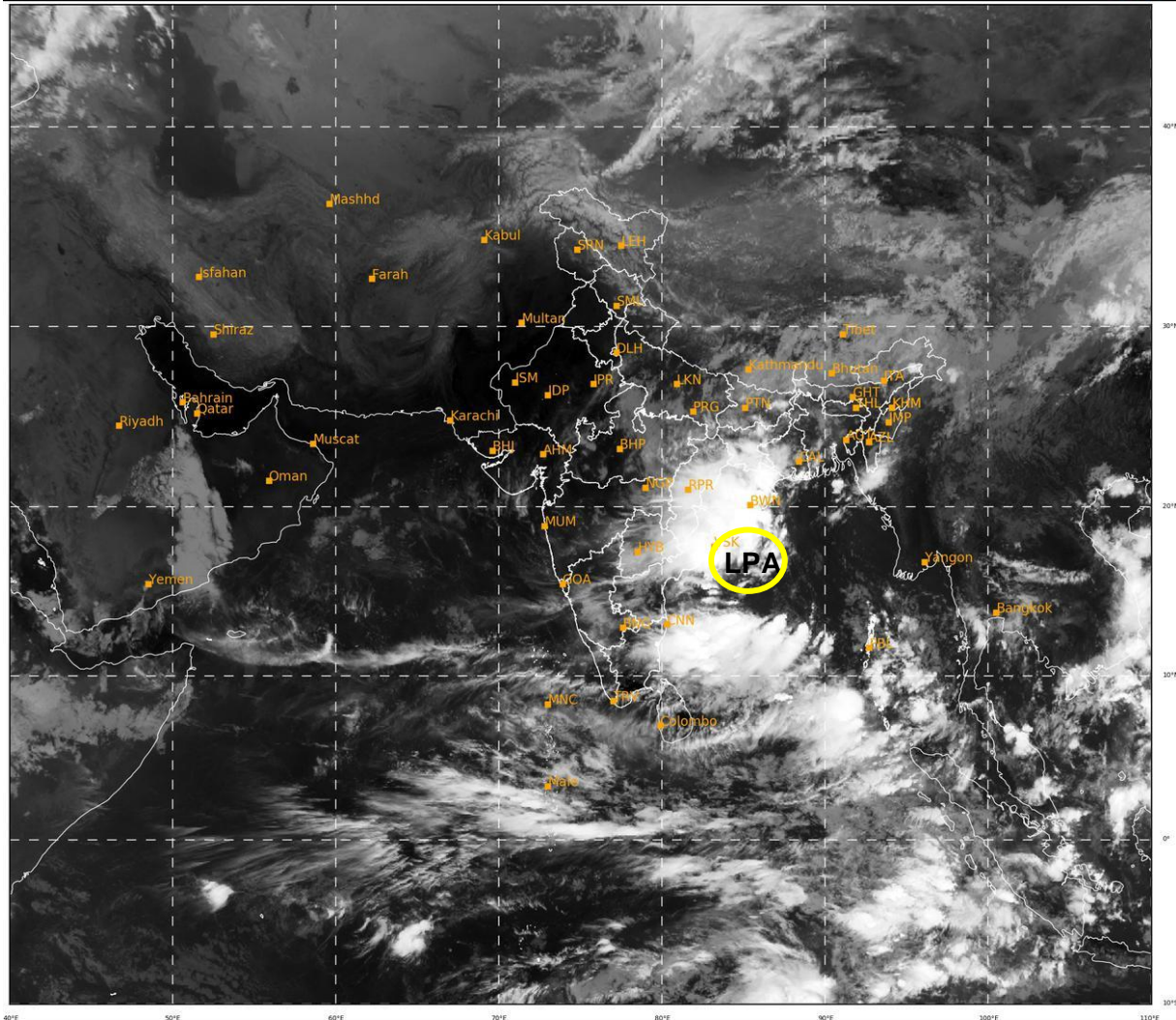
ARABIAN SEA:

SCATTERED LOW AND MEDIUM CLOUDS WTH EMBEDDED MODERATE TO INTENSE CONVECTION LAY OVER SOUTH ARABIAN SEA, LAKSHADWEEP ISLANDS AREA AND COMORIN AREA. SCATTERED LOW AND MEDIUM CLOUDS WTH WEAK TO MODERATE CONVECTION LAY OVER NORTH ARABIAN SEA OFF SOUTH GUJARAT COAST AND CENTRAL ARABIAN SEA.

PROBABILITY OF CYCLOGENESIS (FORMATION OF DEPRESSION) DURING NEXT 120 HRS:

24 HOURS	24-48 HOURS	48-72 HOURS	72-96 HOURS	96-120 HOURS
NIL	NIL	NIL	NIL	NIL

Remarks: NIL



507

942

IMD,DELHI

LPA: LOW PRESSURE AREA